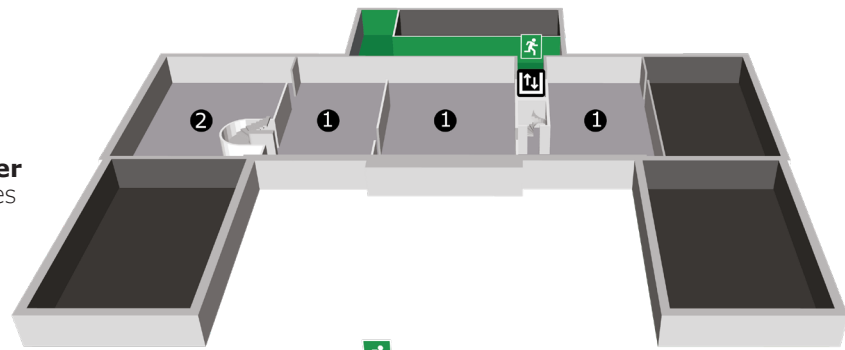


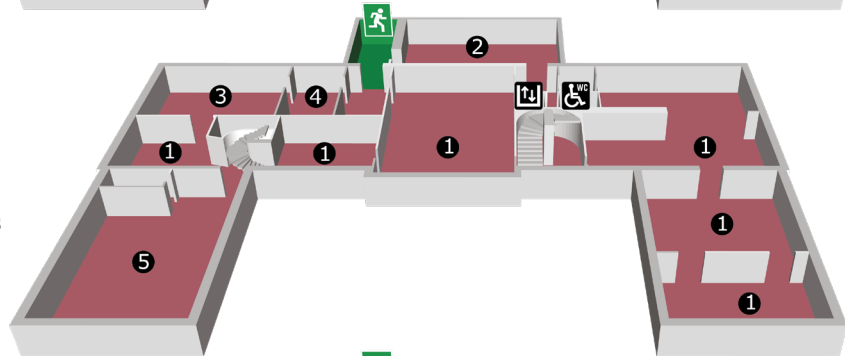
# Museet uppifrån och ner

The museum from the top down

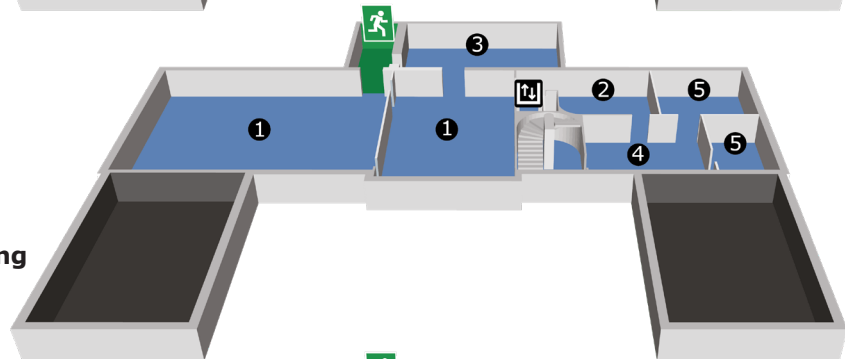
- 1 **Rettigs konstsalar**  
Rettig Art Gallery
- 2 **Textila mönster & tekniker**  
Textile patterns and techniques



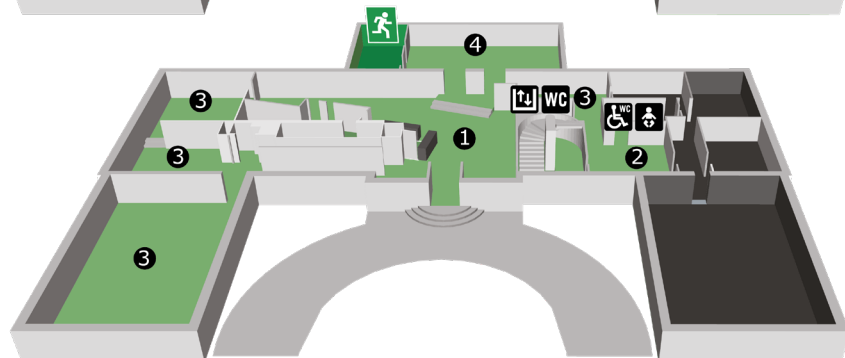
- 1 **Rettigs konstsalar**  
Rettig Art Gallery
- 2 **Smaken & kapitalet**  
Taste & Capital
- 3 **Cyrénsalen**  
The Cyrén hall
- 4 **Gefle Porcelain & Bo Fajans**  
Gefle porcelain & Bo Fajans
- 5 **Hörsal**  
Auditorium



- 1 **Historien händer här**  
Cultural history
- 2 **Fråga bilden**  
Ask the Image
- 3 **Spår av liv**  
Traces of Life
- 4 **Socket spel och strömning**  
Exhibition
- 5 **Ateljéer**  
Ateliers



- 1 **Entré Butik Kafé**  
Entrance Shop Café
- 2 **Kapprum**  
Cloakroom
- 3 **Tillfälliga utställningar**  
Temporary exhibitions
- 4 **Faktarum**  
Reference room



- 1 **Tillgänglig entré**  
Accessible entrance

